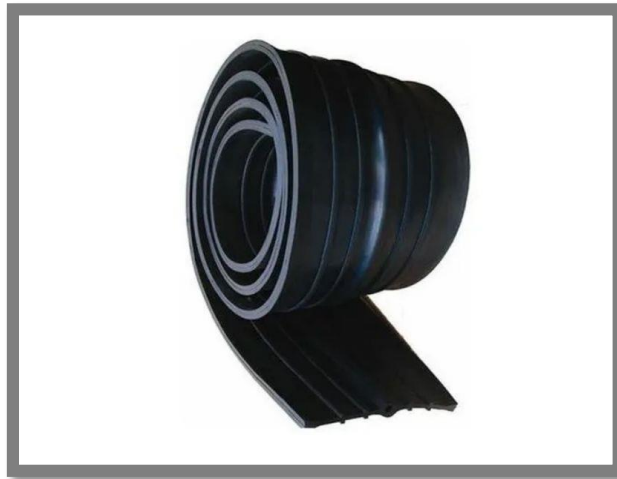


## **PVC WATER BAR**



PVC Water Bar is a hydrophilic PVC water stopper designed for waterproofing all types of concrete construction joints for civil engineering and building constructions. PVC Water Bar is capable of sealing heads of water up to 50 meters and is widely used to seal horizontal and vertical construction joints for poured in-situ concrete. It is treated with a delay coating thus preventing it from premature expansion.

*Where pursuit to progress is endless...*  
[www.waltzerindia.com](http://www.waltzerindia.com)

### **Specifications**

- High Quality Control
- Satisfactory Water-Stopping Effect
- No fear of Aging, and Life of Semi-permanent Longevity
- Elastic and Durable
- No Effect on Characteristics in Low Temperature: With a special compound admixed, this material will not lose the elasticity in low temperature and also provides the superior characteristic of Brittleness Temperature as low as -39.
- Simple Handling and Easy Work
- Economical
- Can be used at various places.

## FEATURES



Best in quality material used to manufacture our  
PVC Water Bar.



With a special compound admixed, this material will not lose the elasticity in low temperature and also provides the superior characteristic of Brittleness Temperature as low as -39.



It provides Satisfactory Water-Stopping Effect and it's so durable that there is no fear of Aging, and Life of Semi-permanent Longevity



## **PLACES OF USE**

- In Hydroelectric power station - Dam, Headrace, Culvert, Water tunnel, Open ditch, Surge tank, Wall of underground hydroelectric power station, Temporary drainage channel, Temporary shutoff, etc.  
[www.waltzerindia.com](http://www.waltzerindia.com)
- In Thermoelectric power station-Intake, Water storage tank, Building, Coal conveyor pit and so on.
- In Water-works and Sewage-Reservoir, Settling pond, Purifying vessel, Treating vessel, Headrace, etc.
- In Agriculture and Irrigation- Drainage pipe head, open channel, Siphon, Culvert, Reservoir and so forth.
- In Riparian works and Harbor- Dam, Breakwater, Tide embankment, Sand bank, Buttress wall in reclamation, etc.
- In Railroad and Road- Tunnel, Retaining wall, Subway, Elevated Bridge, Platform, Underground railway, Culvert, Aqueduct bridge, etc.
- In Building structure- Foundation, Retaining wall & Buttress wall, Slab, Basement and so on.
- Others- Dry dock, Swimming pool, etc.

**We also deal in various types of product**



***OUR ONLINE PRESENCE***



WhatsApp  
Business



+91-8818893881



support@waltzerindia.com



1A, Balaji Market, Hawa  
Bangla, Indore, (M.P. )